

# Tennessee Ag & Forestry Stats

## Economic Contributions of Agriculture and Forestry in Tennessee

Jamey Menard  
Agri-Industry Modeling & Analysis Group (AIM-AG)  
Department of Agricultural and Resource Economics

2023

AGRICULTURAL &  
RESOURCE ECONOMICS  
**URIA** INSTITUTE OF  
AGRICULTURE  
THE UNIVERSITY OF TENNESSEE

**AIM-AG**

Agri-Industry Modeling  
& Analysis Group



# CONTENTS

Study Information .....	4
Crops .....	6
Livestock .....	8
Ag Commodity Rankings .....	10
Ag Commodities with Largest U.S. Market Share .....	12
Forestry .....	14
Annual Removals of Sawtimber Trees .....	16
Forestry Exports .....	18
Crop & Livestock Exports .....	20
Ag & Forestry Manufacturing .....	22
Direct Economic Activity in Ag & Forestry .....	25
Direct Economic Activity in Farm Production .....	26
Direct Primary & Secondary Forest Products ..	28
Total Impacts from Ag & Forestry Inputs .....	29
Counties with Highest Economic Activity .....	30
Total Economic Impacts .....	31
Special Section: Farmland Loss .....	32
Commodity Changes .....	34
Tax Impacts .....	35

Information for this summary document was taken from the Research Series RR 23-001-A report titled "Economic Contributions of Agriculture and Forestry in Tennessee, 2023" found at: [aimag.tennessee.edu](http://aimag.tennessee.edu)

Information sources for the tabular data can also be found in this document.

This study continues the series of previous biannual reports beginning in 1997, using IMPLAN data to analyze the economic contributions and importance of the agricultural and forestry industrial complex on Tennessee's economy.

# \$89 billion

In 2021, the *agri-forestry industrial complex* directly and indirectly contributed an estimated \$89.0 billion to the Tennessee economy, accounting for multiplier effects, which was **10.9%** of the economic activity conducted within the state.

## EMPLOYS 366,154

*Agriculture accounted for:*

**8%** OF THE STATE'S ECONOMY

**\$65.6** BILLION IN OUTPUT

**281,794** IN EMPLOYMENT

Tennessee's **agri-forestry industrial complex** includes the primary industries typically associated with agricultural and forestry operations such as growing crops, the breeding and feeding of livestock, along with the management and logging of trees. The **industrial complex** also includes both input-supplying industries and value-added subsectors comprised of food and beverage manufacturing, apparel and textiles, and forestry products manufacturing.

The following statistics are based upon a study using the Impact Analysis for Planning (IMPLAN) model's most recent data set (2021) for Tennessee to measure the economic contributions and importance of the agricultural and forestry industrial complex on Tennessee's economy. Not only were direct economic contributions on related input industries and resulting expenditures by households determined but also the indirect and induced impacts that economic activity might have on the entire Tennessee economy (**multiplier effects**).

Multipliers measure the response of the economy to a change in production or demand. The concept of multipliers rests on the difference between the initial impact of the final demand and total **impacts** of a change.

- **Direct impacts** measure the responses of an industry given a change in final demand for that same industry.
- **Indirect impacts** represent the response by all local industries that occur as a result of a change in final demand for a specific industry.
- **Induced impacts** represent the response by all local industries caused by increased or decreased expenditures





of new household income generated (lost) from the direct and indirect impacts of the change in final demand for a specific industry.

IMPLAN output includes descriptive measures of the economy including total industry output (a measure of economic activity), employment, labor income and total value-added for 546 industries in the Tennessee economy.

- **Employment** represents total wage and salary employees, as well as self-employed jobs in a region, both full-time and part-time workers.
- **Labor income** is defined as employee compensation, as well as benefits and proprietary (owner-operator) income.
- **Total industry output** is defined as the value of production by industry per year or a measure of overall economic activity by that industry.
- **Total value-added** is defined as all income to workers paid by employers; self-employed income; interests, rents, royalties, dividends and profit payments; and excise and sales taxes paid by individuals to businesses.

.....

**Agriculture and forestry contributed**

**\$89 billion**

**to Tennessee's**

**\$820 billion**

**economy.**

.....





**TENNESSEE RANKED IN THE  
UPPER HALF OF THE NATION FOR  
MOST MAJOR CROPS.**

**Crops with the largest  
cash receipts:**

**Corn for grain**

**Soybeans**

**Cotton**

**Hay**

**Wheat**

**Tobacco**

# 2021 Tennessee Crop Commodity Rankings

Crops	Harvested Acreage	TN Ranking	Cash Receipts <sup>a</sup>	Percent of TN Crop Total <sup>b</sup>
	(Thousand Acres)		(Thousand \$)	
Hay (all types)	1,705	10 <sup>c</sup>	\$192,858	6.8
Soybeans	1,520	17	\$781,936	27.5
Corn for grain	960	17	\$864,751	30.4
Winter wheat	330	19	\$141,092	5.0
Cotton, lint	270	9	\$250,295	8.8
Corn, silage	35	30	--	--
Tobacco, all	12.9	4	\$78,912	2.8

<sup>a,b</sup>For 2021, cash receipts for all commodities grown in Tennessee were \$4.4 billion (\$2.8 billion for crops).

<sup>c</sup>For 2021, Tennessee ranked 32nd for alfalfa hay.

Source: USDA/ERS; USDA/NASS

CASH RECEIPTS FOR  
2021 CROP COMMODITIES  
TOTALED  
**\$2.8 billion.**

.....

Of the 4.8 million acres harvested:  
35.5% in hay  
31.7% in soybeans  
20% in corn for grain  
6.9% in wheat  
5.6% in cotton

# 2021 Tennessee Livestock Rankings

Livestock	Inventory	State Ranking	Cash Receipts <sup>a</sup>	Percent of Total <sup>b</sup>
	(Number)		(Thousand \$)	
Broilers <sup>c</sup>	195,300,000	15	\$602,596	38.7
All chickens <sup>d</sup>	3,103,000	27	\$69,242 <sup>e</sup>	4.4
Cattle & calves <sup>f</sup>	1,790,000	16	\$582,781 <sup>g</sup>	37.4
Beef cows <sup>h</sup>	900,000	12	--	--
Hogs <sup>i</sup>	305,000	19	\$121,525 <sup>g</sup>	7.8
Equine <sup>j</sup>	104,827	9 <sup>k</sup>	--	--
Milk cows <sup>f</sup>	28,000	32	\$97,079 <sup>l</sup>	6.2

<sup>a,b</sup>For 2021, cash receipts for all commodities were \$4.4 billion (\$1.6 billion for livestock and products).

<sup>c</sup>Period December 1 previous year through November 30, 2021.

<sup>d</sup>December 1, 2020-2021; excludes commercial broilers.

<sup>e</sup>Includes eggs and farm chickens; excludes commercial broilers and turkeys.

<sup>f</sup>January 1, 2021.

<sup>g</sup>Receipts from marketings and sale of farm slaughter.

<sup>h</sup>As of January 1, 2021.

<sup>i</sup>December 1, 2021.

<sup>j</sup>Includes horses, ponies, mules, burros and donkeys.

<sup>k</sup>For 2017, Tennessee was ranked 9th for horses and ponies and 2nd for mules, burros and donkeys.

<sup>l</sup>Milk cash receipts from marketings.

**TN RANKS**  
**12th**  
in the U.S. for  
number of beef  
cows on farms.

Tennessee's  
top beef cattle  
county is Greene  
County and  
Monroe County  
for dairy cattle.



CASH RECEIPTS FOR  
2021 LIVESTOCK COMMODITIES  
TOTALLED

**\$1.6 billion.**

TN RANKS  
**16th**

in the U.S. for the  
number of cattle  
and calves on farms.

TN RANKS  
**15th**

in the U.S. for the  
number of  
broilers on farms.





## TN Ranks in the Top 25 States for the Following Ag Commodities

Rank	Commodity
4	Tobacco
9	Cotton
9	Equine
10	Hay
12	Beef cows
15	Broilers
16	Cattle & calves
17	Soybeans
17	Corn for grain
19	Winter wheat
19	Hogs

## TN's Top Commodity Cash Receipts, 2021

Commodity	Value
	(Million \$)
Corn	\$864.7
Soybeans	\$782.0
Broilers	\$602.6
Cattle & calves	\$582.8
Cotton	\$250.3
Hay	\$192.9
Wheat	\$141.1
Hogs	\$121.5
Dairy	\$97.1



**In 2021, Tennessee farms used 10.7 million acres or 39.7% of the state's land base.**



**In 2021, the average farm size was 154 acres.**



**Kentucky, North Carolina and South Carolina have similar average farm sizes.**

2021 CASH RECEIPTS FOR ALL  
COMMODITIES IN TENNESSEE:

**\$4.4 billion**

- \$2.8 billion (64.6%) from crops
- \$1.6 billion (35.4%) from livestock and livestock products

**Tennessee Ag Commodities with  
Largest U.S. Market Shares**

Tobacco	7.9%
Cotton	3.4%
Greenhouse, nursery & floriculture	1.9%
Oilseed (primarily soybeans)	1.6%
Poultry & egg production	1.5%
Grain farming	1.0%
All other crop farming <sup>a</sup>	1.0%

<sup>a</sup>Primarily hay/seed farming.

**TN DAIRY FARMING  
COMPARED TO 2019 REPORT**

- Total milk production declined by **7.8%**.
- Number of head declined **12.5%**.
- Production per cow increased **5.4%**.



## State Value of Agricultural Commodities & U.S. Market Share, 2021

Commodity	Value of Production <sup>a</sup>	U.S. Market Share
	(Million \$)	(Percent)
Grain farming	\$1,047.5	1.0
Oilseed farming	\$967.4	1.6
Poultry & egg production	\$696.0	1.5
Beef cattle farming	\$591.3	0.8
Greenhouse, nursery & floriculture	\$380.4	1.9
Cotton farming	\$273.2	3.4
Animal production, except cattle/ poultry/eggs <sup>b</sup>	\$212.0	0.6
All other crop farming <sup>c</sup>	\$187.4	1.0
Vegetable and melon farming	\$119.2	0.5
Dairy cattle & milk production	\$98.0	0.2
Tobacco farming	\$84.1	7.9
Fruit farming	\$13.6	0.1
Tree nut farming	\$2.6	0.03

<sup>a</sup>Includes on-farm consumption, and it is net of inventory changes.

<sup>b</sup>Primarily hogs, sheep and goats, aquaculture, equine and apiculture.

<sup>c</sup>Primarily hay/seed farming.

Source: IMPLAN Group, LLC, 2021 data.



**TOP 3**  
HARDWOOD  
LUMBER-PRODUCING  
STATE IN THE U.S.

Composition of Tennessee  
forests is **89%** hardwoods.

**51%**  
of TN  
is covered  
in forest.

More than  
**120**  
tree species  
exist in  
Tennessee.

**8.5 BILLION**  
estimated live trees.



**Predominant Hardwood  
Species in TN**

White oak  
Red oak  
Hickory  
Yellow poplar  
Maple

**Predominant Softwood  
Species in TN**

Loblolly pine  
Virginia pine  
Red cedar  
Shortleaf pine

**13.8 MILLION ACRES**  
in forest.

.....

**OF THAT 13.8 MILLION ACRES,**  
82.9% privately owned  
10.0% federal  
7.1% state/local.

.....

Oak-hickory dominate forested  
TN acres at  
**9.9 MILLION.**

## Average Annual Removals of Sawtimber Trees by Species Group & Owner Class, 2019

Tree Species Group	Federal	State & Local	Private	Other <sup>a</sup>	Total <sup>b</sup>
Board Feet (international 1/4-inch rule)					
Loblolly & shortleaf pine		4,383,316 <sup>e</sup>	110,751,982 <sup>c</sup>	7,442,061 <sup>d</sup>	122,577,359 <sup>c</sup>
Other yellow pine		727,878 <sup>e</sup>	5,121,528 <sup>e</sup>	13,624,657 <sup>e</sup>	19,474,063 <sup>d</sup>
Eastern white & red pine	55,017 <sup>e</sup>		15,592,537 <sup>e</sup>	6,581,930 <sup>e</sup>	22,229,484 <sup>e</sup>
Eastern hemlock			1,064,195 <sup>e</sup>		1,064,195 <sup>e</sup>
Cypress	17,981,222 <sup>e</sup>			9,109,787 <sup>e</sup>	27,091,009 <sup>e</sup>
Other eastern softwoods			3,765,817 <sup>d</sup>	1,476,335 <sup>e</sup>	5,242,152 <sup>d</sup>
Select white oaks	276,203 <sup>e</sup>	9,550,576 <sup>e</sup>	168,361,055 <sup>c</sup>	26,071,410 <sup>d</sup>	204,259,244 <sup>c</sup>
Select red oaks		8,263,529 <sup>e</sup>	51,322,074 <sup>d</sup>	3,020,674 <sup>e</sup>	62,606,277 <sup>d</sup>
Other white oaks	1,588,056 <sup>e</sup>	2,942,821 <sup>e</sup>	90,302,762 <sup>d</sup>	13,268,990 <sup>d</sup>	108,102,629 <sup>c</sup>
Other red oaks	1,425,271 <sup>e</sup>	1,272,190 <sup>e</sup>	149,900,834 <sup>c</sup>	25,564,705 <sup>d</sup>	178,163,000 <sup>c</sup>
Hickory		3,164,598 <sup>e</sup>	84,109,240 <sup>c</sup>	8,127,877 <sup>d</sup>	95,401,715 <sup>c</sup>
Hard maple		284,871 <sup>e</sup>	20,183,268 <sup>d</sup>	2,030,577 <sup>e</sup>	22,498,716 <sup>d</sup>
Soft maple			7,487,734 <sup>d</sup>	2,428,641 <sup>e</sup>	10,964,392 <sup>d</sup>
Beech	1,048,017 <sup>e</sup>		10,472,039 <sup>d</sup>	2,258,839 <sup>e</sup>	12,730,878 <sup>d</sup>
Sweetgum		3,156,028 <sup>e</sup>	30,246,302 <sup>d</sup>	8,313,127 <sup>e</sup>	41,715,457 <sup>d</sup>
Tupelo & blackgum		952,168 <sup>e</sup>	6,770,387 <sup>d</sup>	1,813,999 <sup>e</sup>	9,536,554 <sup>d</sup>
Ash	2,235,248 <sup>e</sup>	1,062,656 <sup>e</sup>	19,350,077 <sup>d</sup>	892,201 <sup>e</sup>	23,540,182 <sup>d</sup>
Basswood			2,604,691 <sup>d</sup>	813,503 <sup>e</sup>	3,418,194 <sup>e</sup>
Yellow poplar		16,640,878 <sup>e</sup>	213,575,423 <sup>c</sup>	22,098,598 <sup>d</sup>	252,314,899 <sup>c</sup>
Black walnut			10,085,950 <sup>d</sup>	782,566 <sup>e</sup>	10,868,516 <sup>d</sup>
Other eastern soft hardwoods		791,763 <sup>e</sup>	31,306,922 <sup>d</sup>	21,352,873 <sup>d</sup>	53,451,558 <sup>c</sup>
Other eastern hard hardwoods			702,865 <sup>e</sup>	583,245 <sup>e</sup>	1,286,110 <sup>e</sup>
<b>TOTAL</b>	<b>24,609,034<sup>a</sup></b>	<b>53,193,272<sup>d</sup></b>	<b>1,033,077,682<sup>c</sup></b>	<b>177,656,595<sup>e</sup></b>	<b>1,288,536,583<sup>c</sup></b>



# FORESTRY

accounted for

**2.9%**

of the state's economy,  
employed more than **84,360**  
Tennesseans and generated  
**\$23.4 billion** in output.

Tennessee's average annual sawtimber  
removals on timberland were estimated at

**1.3 billion  
board feet**

.....

**80.2%**

of the timber removals came from  
private landowners.

<sup>a</sup>Other non-federal public.

<sup>b</sup>Totals may not add due to rounding.

<sup>c</sup>Percent sampling error  $\leq$  to 25 percent.

<sup>d</sup>Percent sampling error  $>$  25 percent and  $\leq$  to 50 percent.

<sup>e</sup>Percent sampling error  $>$  50 percent.

Source: USDA Forest Service, 2023



## **FORESTRY EXPORTS**

---

**2019 exports of Tennessee forest products and furniture and related products outside the U.S. totaled**

**\$250.0 million.**

---

**\$166.0  
million**

**export value of  
wood products.**

**\$84.0  
million**

**export value of  
furniture & related  
products.**

---

**2021 Tennessee exports of forestry products totaled**

**\$49.0 million.**

## Top TN Forest Product Exports

Forest Products	Value of Sales
	(Thousand \$)
Oak lumber, sawn	\$87,685
Ash lumber, sawn	\$15,008
Wooden casks & barrels	\$13,493
Non-coniferous lumber, sawn	\$12,105
Builders' joinery & carpentry wood	\$10,320

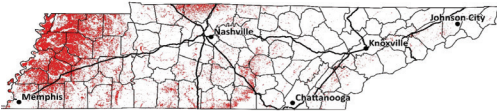
## Top Export Markets for TN Forestry Products

Country	Value of Sales
	(Million \$)
Canada	\$23.0
China	\$12.0
Hong Kong	\$3.0
Mexico	\$3.0
Japan	\$1.0

## Top Major Export Markets for TN Crops

Country	Value of Sales
	(Million \$)
China	\$160.0
Turkey	\$103.0
Pakistan	\$93.0
Vietnam	\$81.0
Bangladesh	\$34.0

### Location of Cropland in Tennessee, 2021



## Top Five Export Markets for TN Livestock

Country	Value of Sales
	(Million \$)
China	\$11.0
Mexico	\$3.0
Brazil	\$1.0
Canada	\$1.0
Vietnam	\$1.0



.....  
**Estimated international exports for  
Tennessee farm products totaled nearly  
\$1.9 billion.**  
.....

**\$25.0  
million**  
value of TN's  
exported livestock  
products.

**\$703.0  
million**  
value of TN's  
exported crop  
products.

**Top 10  
Commodities Exported,  
2021**

Commodity	Value (Million \$)
Soybeans	\$435.8
Other plant products	\$300.1
Cotton	\$218.0
Corn	\$203.8
Feed & other feed grains	\$135.2
Soybean meal	\$89.3
Wheat	\$85.5
Beef & veal	\$84.2
Broiler meat	\$71.8
Tobacco	\$70.5

# AGRICULTURAL & FORESTRY MANUFACTURING INDUSTRIES

## \$46.6 billion

VALUE OF SHIPMENTS.

Of the value-added agri-forestry sectors,  
FOOD MANUFACTURING EMPLOYED  
the largest share at

## 35,100.

## \$1.9 billion

TN TEXTILE MILL  
PRODUCTS SHIPPED  
(includes product mills  
& apparel).

## \$12.5 billion

TN FOREST PRODUCTS SHIPPED  
(includes manufacturing of wood  
products, paper, furniture &  
related products).

## TN National Market Share

	(Percent)
Beverage & tobacco	5.2
Textile mills	4.3
Paper manufacturing	3.1
Furniture & related products manufacturing	2.8
Wood product manufacturing	2.7
Food manufacturing	2.6
Textile product mills	2.2
Apparel manufacturing	2.1

# Manufacturing Statistics for Tennessee, 2021

Manufacturing Industry/NAICS Code	Employees	Payroll	Establishments	Value of Shipments
	(Number)	(Thousand \$)	(Number)	(Thousand \$)
Food (311)	35,100	\$1,841,363	552	\$23,571,084
<i>Animal slaughtering/processing (3116)</i>	10,831	\$454,987	83	\$4,296,183
Beverage & tobacco products (312)	4,331	\$254,900	271	\$8,687,504
Textile mills (313)	2,878	\$173,412	81	\$1,140,513
Textile product mills (314)	2,268	\$93,375	150	\$523,283
Apparel (315)	2,449	\$60,098	107	\$197,858
Leather & allied products (316)	a	a	33	a
Wood products (321)	12,804	\$578,128	504	\$4,214,411
Paper (322)	10,327	\$688,551	209	\$6,151,903
Furniture & related products (337)	9,773	\$137,166	394	\$2,109,356
<b>TOTAL<sup>b</sup></b>	<b>79,930</b>	<b>\$3,826,993</b>	<b>2,301</b>	<b>\$46,595,912</b>

<sup>a</sup>Not reported due to high sampling variability.

<sup>b</sup>Values for animal slaughtering and processing are included in food manufacturing (311) values.

## 80,000+

TENNESSEANS WERE EMPLOYED  
with a  
PAYROLL OF

## \$3.8 billion.

In 2021, direct agricultural and forestry-related industries contributed a total of

**\$58.0 billion**

or 7.1% of the state's economy.

**DIRECT  
TOTAL  
VALUE  
ADDED**

was

**\$21.5  
BILLION,**

with

**\$8.6 billion**

in labor income.

**DIRECT EMPLOYMENT**

in agricultural and forestry-related industries was close to

**189  
THOUSAND**

or 4.6% of the workforce.

## EMPLOYMENT

### Agriculture

- 53.6% of workforce employed in primary agriculture.
- 44.4% employed in secondary (value-added) agriculture.
- 2.0% in agricultural inputs.

### Forestry

- 78.5% of the workforce was employed in secondary (value-added) forestry.
- 13.2% employed in primary forestry.
- 8.3% in forestry inputs.

# State Level: Direct Economic Activity in Agriculture & Forestry

Sector	TIO <sup>a</sup>	Employment	Labor Income <sup>a</sup>	TVA <sup>a</sup>
	(Million \$)	(Number)	(Million \$)	(Million \$)
<b>All Sectors<sup>b</sup></b>	<b>\$820,036</b>	<b>4,128,541</b>	<b>\$275,541</b>	<b>\$436,829</b>
<b>Agriculture &amp; forestry</b>	<b>\$58,034</b>	<b>188,728</b>	<b>\$8,853</b>	<b>\$21,483</b>
Agriculture	\$43,533	148,950	\$5,883	\$15,978
Inputs	\$2,064	2,944	\$269	\$598
Primary ag	\$4,903	79,804	\$709	\$1,656
Secondary ag	\$36,566	66,202	\$4,906	\$13,724
Forestry	\$14,501	39,778	\$2,970	\$5,505
Inputs	\$366	3,293	\$222	\$223
Primary forestry	\$3,495	5,267	\$493	\$1,376
Secondary forestry	\$10,640	31,218	\$2,255	\$3,906

<sup>a</sup>TIO=total industry output; TVA=total value added. See definitions on page 5 for more information.

<sup>b</sup>Includes non-agricultural and non-forestry (total economy).

## TN's Agri-Forestry Industrial Complex

**Primary agriculture** — crop and livestock commodities.

**Secondary agriculture** — food and beverage, tobacco products, textile manufacturing, and leather and allied products.

**Agricultural inputs** — agricultural chemicals and machinery.

**Primary forestry** — pulp, paper and paperboard mills; sawmills; and wood preservation.

**Secondary forestry** — wood products manufacturing.

**Forestry inputs** — forest machinery, timber tract production and commercial logging.



## State Level: Direct Economic Activity in Farm Production, 2021

Rank	Sector	TIO <sup>a,b</sup>	Employment	Labor Income <sup>c</sup>	TVA <sup>a</sup>
		(Million \$)	(Number)	(Million \$)	(Million \$)
<b>All Farm Production</b>		<b>\$4,903</b>	<b>79,804</b>	<b>\$709</b>	<b>\$1,656</b>
1	Grain farming	\$1,048	10,696	\$87	\$54
2	Oilseed farming	\$967	5,398	\$94	\$523
3	Poultry & egg production	\$696	2,638	\$26	\$66
4	Beef cattle farming	\$591	14,568	\$31	\$174
5	Cotton farming	\$380	5,118	\$64	\$181
6	Greenhouse, nursery & floriculture production	\$273	3,210	\$67	\$107
7	Agriculture & forestry support activities	\$220	7,092	\$237	\$210
8	Vegetable & melon farming	\$212	5,553	\$35	\$141
9	All other crop farming	\$187	20,432	\$31	\$74
10	Animal production, except cattle/poultry/eggs	\$119	1,755	\$13	\$57
11	Dairy cattle & milk production	\$98	438	\$4	\$18
12	Tobacco farming	\$84	1,849	\$20	\$37
13	Commercial hunting & trapping	\$14	309	\$2	\$9
14	Fruit farming	\$9	204	\$0 <sup>c</sup>	\$3
15	Tree nut farming	\$3	65	\$0 <sup>c</sup>	\$2

<sup>a</sup>TIO=total industry output; TVA=total value added. See definitions on page 5 for more information.

<sup>b</sup>Includes on-farm consumption, and it is net of inventory changes.

<sup>c</sup>Values of zero are nonzero values less than 1.



## Direct Economic Activity for Primary Forest Products

	Total Industry Output Value (Million \$)
Paper mills	\$1,499
Paperboard mills	\$1,009
Sawmills	\$880
Wood preservation	\$79
Pulp mills	\$29
<b>TOTAL</b>	<b>\$3,495</b>

## Direct Economic Activity for Secondary Forest Products

	Total Industry Output Value (Million \$)
Paper manufacturing	\$5,421
Furniture & related products manufacturing	\$1,721
Wood windows & doors & millwork	\$1,018
Manufactured homes manufacturing	\$991
Other wood products manufacturing	\$871
Veneer, plywood & engineered wood products manufacturing	\$619
<b>TOTAL</b>	<b>\$10,640</b>

## Total Economic Impacts from Agricultural and Forestry Inputs, 2021<sup>a</sup>

Sector	TIO <sup>b</sup>	Employment	Labor Income <sup>b</sup>	TVA <sup>b</sup>
	(Million \$)	(Number)	(Million \$)	(Million \$)
<b>Total Agricultural Inputs</b>	<b>\$3,125</b>	<b>7,819</b>	<b>\$614</b>	<b>\$1,167</b>
<i>Agricultural machinery</i>	\$2,068	5,703	\$387	\$674
Farm machinery & equipment	\$480	1,403	\$103	\$172
Lawn & garden equipment	\$1,588	4,300	\$284	\$502
<i>Agricultural chemicals</i>	\$1,056	2,116	\$226	\$493
Nitrogenous fertilizer	\$15	32	\$3	\$6
Phosphatic fertilizer	\$9	22	\$2	\$4
Fertilizer mixing	\$29	84	\$7	\$12
Pesticide & other ag chemicals	\$897	1,693	\$192	\$420
Lime	\$106	285	\$23	\$52
<b>Total Forestry Inputs</b>	<b>\$669</b>	<b>5,553</b>	<b>\$337</b>	<b>\$404</b>
Commercial logging	\$528	4,651	\$274	\$326
Sawmills, woodworking & paper machinery	\$91	415	\$33	\$42
Forestry, forest products & timber tract operations	\$51	487	\$30	\$36

<sup>a</sup>Values with multiplier effects.

<sup>b</sup>TIO=total industry output; TVA=total value added. See definitions on page 5 for more information.

## Tennessee Counties with Highest Proportion of Economic Activity for Agriculture & Forestry, 2021<sup>a</sup>

Sectors	County	Percent
<b><i>Agriculture</i></b>		
Primary	Lake	18.9
	Clay	16.4
All	Moore	59.9
	Trousdale	26.5
<b><i>Forestry</i></b>		
Primary	Wayne	1.9
	Grundy	1.6
All	Grainger	24.2
	Hardin	20.6
<b><i>Combined (Ag &amp; Forestry)</i></b>		
Primary	Lake	18.9
	Clay	16.4
All	Moore	60.1
	Meigs	34.4

<sup>a</sup>Compared to all economic activity for the county.



## Estimated Total Economic Impacts from Ag & Forestry<sup>a</sup>

	Total Industry Output Value (Million \$)	Labor Income (Million \$)
<b><i>Agriculture &amp; Forestry</i></b>	<b>\$88,999</b>	<b>\$18,658</b>
Agriculture	\$65,590	\$12,698
Inputs	\$3,125	\$614
Primary agriculture	\$7,902	\$1,573
Secondary agriculture	\$54,564	\$10,511
Forestry	\$23,409	\$5,960
Inputs	\$669	\$337
Primary forestry	\$5,752	\$1,288
Secondary forestry	\$16,987	\$4,335

<sup>a</sup>Value with multiplier effects.

.....

**\$89  
BILLION**

The estimated value that agriculture and forestry contributed to Tennessee's

**\$820 billion**  
economy in 2021.

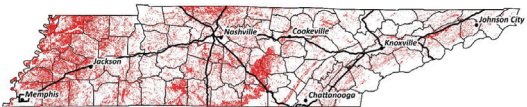
.....

# SPECIAL SECTION: FARMLAND LOSS

The American Farmland Trust initiated research focused on farmland loss in the U.S. that included spatial analyses of U.S./state farmland loss between 2001 and 2016. Two land classifications were determined: land best suited for intensive crop production (significant agricultural land) and best lands in each state. For the U.S., research indicated 4.1 million acres were converted to urban and highly developed land (UHD). For low-density residential (LDR) land, that value was close to 7 million acres. Low-density residential conversion predisposes further conversion to UHD land (23 times more likely).

Tennessee ranked **4th** in the nation as one of the most threatened states for agricultural land converted to UHD and LDR land use.

Nationally Significant Agricultural Land for Tennessee



.....

## TN RANKED 3RD

for conversion of nationally significant agricultural land at 212,000 acres.

.....

## TN RANKED 10TH

in population growth at 894,000.

.....

# States with Highest UHD<sup>a</sup> & LDR<sup>a</sup> Land Conversions

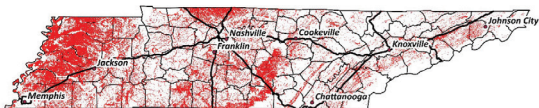
	Acres
Texas	1.4 M
North Carolina	732,000
Tennessee	659,000
Georgia	544,000
California	466,000

<sup>a</sup>UHD = urban and highly developed; LDR = low density residential  
 Source: American Farmland Trust and Conservation Science Partners, 2020.

## Agricultural Land Converted to Urban & Highly Developed or Low-Density Residential Land Use, 2001-2016



## Best Agricultural Land for Tennessee



### WEAK LAND USE REGULATIONS AT STATE LEVEL

cited as primary factor for LDR land conversion.

### POPULATION GROWTH

cited as primary factor in UHD land conversion.

## Commodity Changes, 2019 to 2021

Livestock Commodity	% Change to Inventory	Price Change (%)
All hogs	22.0	18.7
All other chickens	19.3	29.0
Broilers	9.9	9.9
Eggs	8.4	6.9
All cattle & calves	-0.6	10.3
Milk cows	-12.5	-

Crop Commodity	% Change to Harvested Acres	Price Change (%)
Wheat	53.5	26.1
Soybeans	10.9	41.4
Corn	4.4	43.5
Hay, all	-3.3	14.5
Tobacco	-9.8	6.0
Cotton	-33.3	49.2



---

# TAX IMPACTS

**\$2.1  
billion**

THE ESTIMATED 2021 TAX IMPACTS at the state and local levels as a result of direct and multiplier effects for agriculture and forestry. An additional **\$3.9 billion** is generated for the federal government.

**Agricultural tax revenues:**

- \$1.7 billion, state/local
- \$2.7 billion, federal

**Forestry tax revenues:**

- \$467.5 million, state/local
- \$1.2 billion, federal





# AIM-AG

Agri-Industry Modeling  
& Analysis Group



**AGRICULTURAL &  
RESOURCE ECONOMICS**

**UTIA** INSTITUTE OF  
AGRICULTURE  
THE UNIVERSITY OF TENNESSEE

August 2023

The University of Tennessee is an EEO/AA/Title VI/Title IX/Section 504/ADA/ADEA institution in the provision of its education and employment programs and services. All qualified applicants will receive equal consideration for employment and admission without regard to race, color, national origin, religion, sex, pregnancy, marital status, sexual orientation, gender identity, age, physical or mental disability, genetic information, veteran status and parental status.