

TN Producer Meeting

Mark Alley, DVM, MBA

North Carolina State University
College of Veterinary Medicine

What Are Your Goals & Financial Status?



OR



FUN **OR** **MONEY?**

Dr. Geof Benson

Primary Function of a Cow/Calf
operation is to produce
CALVES!!!!



Weaned Calf Crop Percent

- # calves weaned / # females exposed

- Example

- 100 cow herd weans 80 calves = calf crop of 80%

- Greatest loss associated with failure to get pregnant



↑ calf crop % from 80 to 90% almost same
as ↑ weaning weight 500 to 600 pounds

Dollars Returned per Cow (Oct.-Nov. 5 Year Avg. *)			
Percent Calf Crop Weaned	Average Weaning Weight		
	600	500	400
100	\$570	\$505	\$452
95	\$542	\$480	\$429
90	\$513	\$455	\$407
85	\$485	\$429	\$384
80	\$456	\$404	\$362
75	\$428	\$379	\$339
70	\$399	\$354	\$316

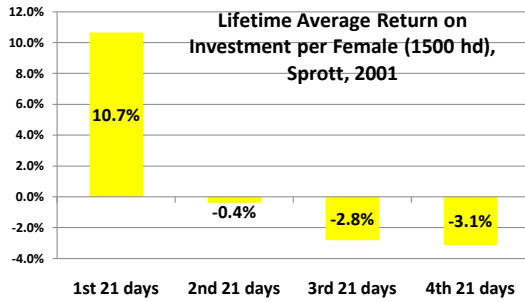
Georgia Auction Markets – 2004-2008. Adapted from Ted Dyer, Extension Animal Scientist GA.

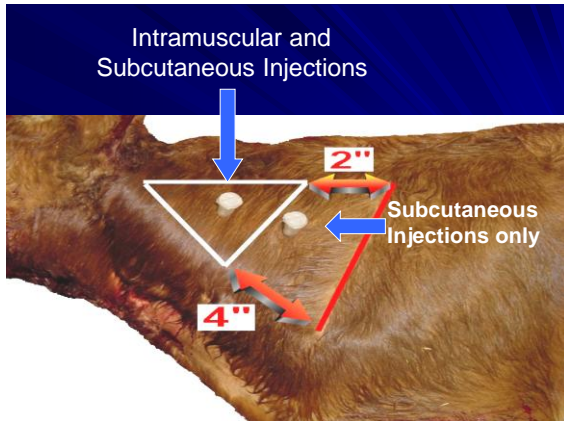
*\$/cwt: \$95 (600 lbs.); \$101 (500 lbs.); \$113 (400 lbs.)

Contributing Factors to Low Calf Crop Percentage

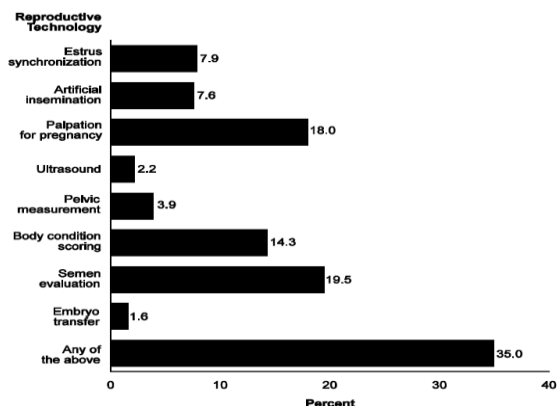
- Nutrition
 - BCS, minerals
- Herd Health
 - Diseases associated with reproduction
 - BVD and Lepto
 - Diseases associated with calf loss after calving
 - Calf Scours, Respiratory
- Defined Breeding Season
 - 2 to 2.5 ADG calf
- Minimizing Calving Difficulties
- Pregnancy Diagnosis
 - Maintenance costs of \$300 to \$600
- Bull breeding soundness exam

RECORDS ARE REQUIRED!!!!





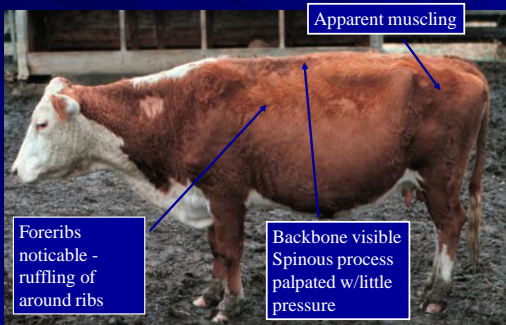
Percentage of Operations by Reproduction Technologies Used



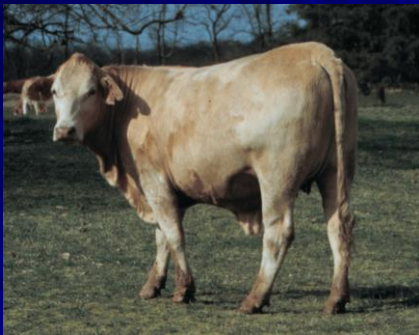
Cow No. 1

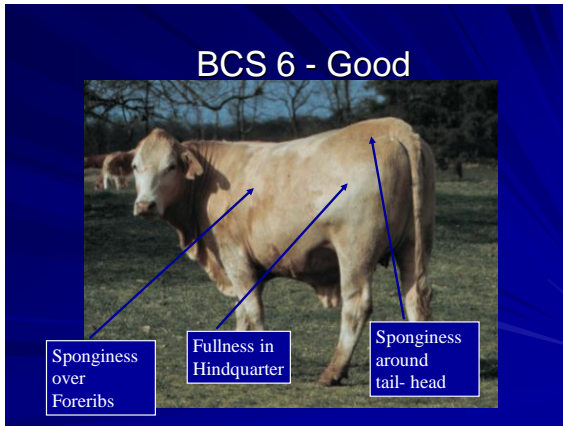


BCS 3 - Thin



Cow No. 3







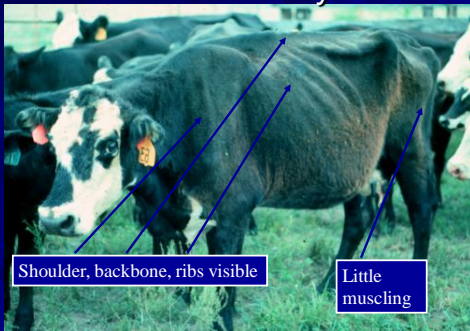




Cow No. 2



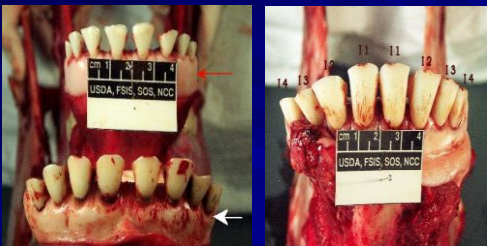
BCS 2 – Very thin





AGE

http://www.fsis.usda.gov/ofo/tsc/bse_information.htm



Age



Appropriate Culling

- Temperament
- Pregnancy Status
- Age
- Lameness
- Udder Conformation
- Physical Abnormalities
